



# Portfolio

## DESIGN + PRINT

We create Visual Communication experiences that will make you Listen to your Eyes and See the Sound!

Professional handling of your Corporate Identity is integral to every project undertaken so your brand gets the respect it deserves.

*Don't say No Way! Call Olé today! 0419 785 550*

## LCR... Supporting Mining and Industrial Services

- Bulk Mineral Haulage Services
- Mining Services
- Mobile Cranes
- Labour Hire
- Heavy Haulage and Transport

Contact our Business Development General Manager on: 07 3332 0009  
Phone Australia Wide: 1300 554 458  
busdev@lcrgroup.com.au  
www.lcrgroup.com.au

## Improve Safety & Productivity

- Safer Mine Site
- Increased Production
- Reduced Costs

Simply use:

**Patented A.R.M\*  
Hardfaced wear parts**

For more info:  
Ph: (07) 3277 9630  
email: armtim@arm.com.au  
www.arm.com.au

A.R.M\* is an abbreviation of the company name Abrasion Resistant Materials

## DOUBLE the life... ...at HALF the cost!

**Expressions of Interest - Technology Licensee's for Abrasion Resistant Materials Pty Ltd. (A.R.M\*)**

- If you are interested in making a difference - reducing costs in the mining industry.
- If you are prepared to follow procedures and already have some infrastructure (welding workshop)
- If you have an approach to business that ensures delivery of a quality product

Then we would like to receive your expression of interest in joining Abrasion Resistant Materials Pty Ltd. We are keen to hear from companies that have both the capacity and the attitude to become an A.R.M\* Licensee.

A six figure investment is required - so please understand - this is not a small decision.  
In the first instance - please forward your contact details to Tim Falkenhagen at armtim@arm.com.au

**A.R.M\* applied to:**  
Draglines | Graders  
Dozers | Excavator Shovels

North Queensland has had an A.R.M\* licensee for many years now - called NQ Hardfacing. So we have learnt what to do (and what not to do) regarding service and technology over the past 14+ years.

**Ph: (07) 3277 9630**  
email: armtim@arm.com.au  
A.R.M\* is an abbreviation of the company name Abrasion Resistant Materials

## Industrial and Mining Services

- Crane Hire and Maintenance
- Professional Labour Hire
- Heavy Lift and Transportation

**www.LCRGroup.com.au**

for the people  
by the people  
with the people

Tel: +675 7332 5343

**EXCLUSIVE  
FREEHOLD TITLE  
RESIDENCES**

**BECAUSE SIZE MATTERS**

Buy now direct from the developer  
[www.parksidevillas.com.au](http://www.parksidevillas.com.au)  
completion mid 2003

**Community  
Open Day**

**Free Sausage Sizzle,  
Displays and Balloons  
for the Kids**

**When** Saturday, 31 July 2004  
10am - 1pm

**Where** Springmount Waste  
Management Facility  
Lot 13, Springmount Road,  
Via Mareeba

THIESS SERVICES fgf

**Come Visit...**

**Filbert's Place**

A fun place for learning about waste and green energy!

School Group Tours  
Tuesdays to Fridays

**Bookings 3252 2886**

THIESS SERVICES

**café CENTRAL**

THIESS  
café CENTRAL  
LOYALTY CARD

Collect a stamp for every hot beverage purchase and receive the tenth hot beverage FREE.

**Proud to be a  
Queenslander**

Thiess today is an international company with a proud and strong Queensland heritage. With offices spanning the globe, Thiess still call Queensland home.

Success for Thiess has been a journey, from humble beginnings contract ploughing and dam sinking to the Snowy Mountains Hydro Scheme to one of Australia's most prominent companies.

A big part of Thiess' journey of success comes from the company's commitment to building partnerships based on mutual trust, dedication to common goals and

an understanding of each other's expectations and values.

As Thiess continues on its journey, it will seek to build bridges to the future, through partnerships with its clients and the communities in which it works.

Success is a journey - not a destination.



Active8 logo

- PMS 368
- PMS Black
- White

Active C A L L P E T E



SAFETY

Active



Active





# campaign



Listen to your eyes - ole graphics visual communication



# campaign

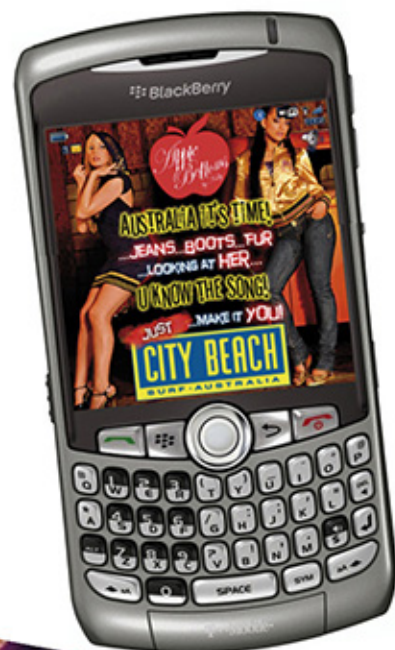
*Apple Bottoms*  
Gift Voucher

**\$50**

Redeemable for online purchase only  
[www.applebottoms.com.au](http://www.applebottoms.com.au)  
To redeem your \$50 voucher, please contact Helen at [Helen@applebottoms.com.au](mailto:Helen@applebottoms.com.au)

*Apple Bottoms*  
by Holly

A woman should not try to fit the jeans, the jeans should fit the woman



ClassicStingray Distributions will make a **\$20 Donation** for every online jeans purchase on this website through to end of August 2009

Jeans for Genes®

get 10% off everything ONLINE  
[www.applebottoms.com.au](http://www.applebottoms.com.au)  
exp 30/6/2009



Check out our Online Store for the latest gear

Browse Shop >>



*Apple Bottoms*

Join Our VIP Mailing List  
[Click Here](#)



# identity



Engineers & Constructors



*Innovative Waste Solutions  
for Brisbane*



A Joint Venture of Siemens and Thiess Services



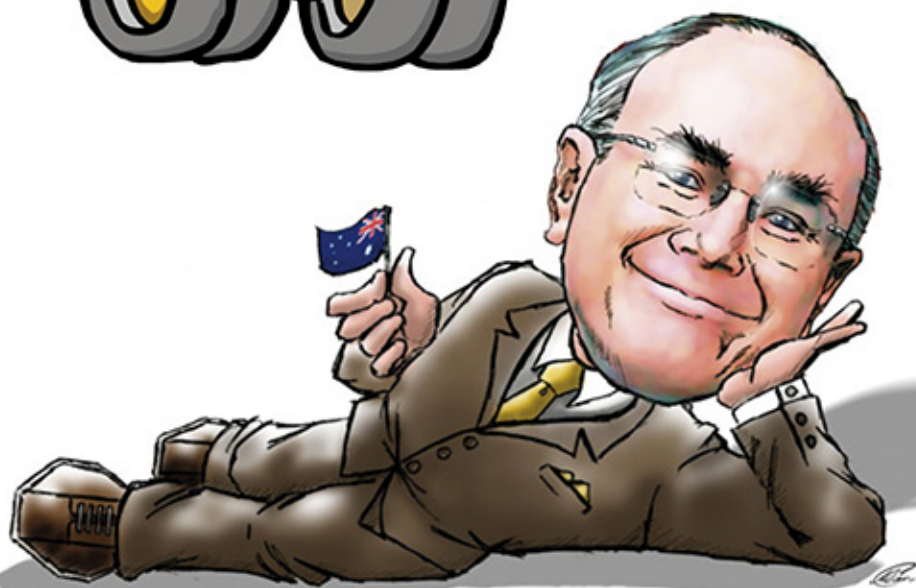
Thiess Leighton India



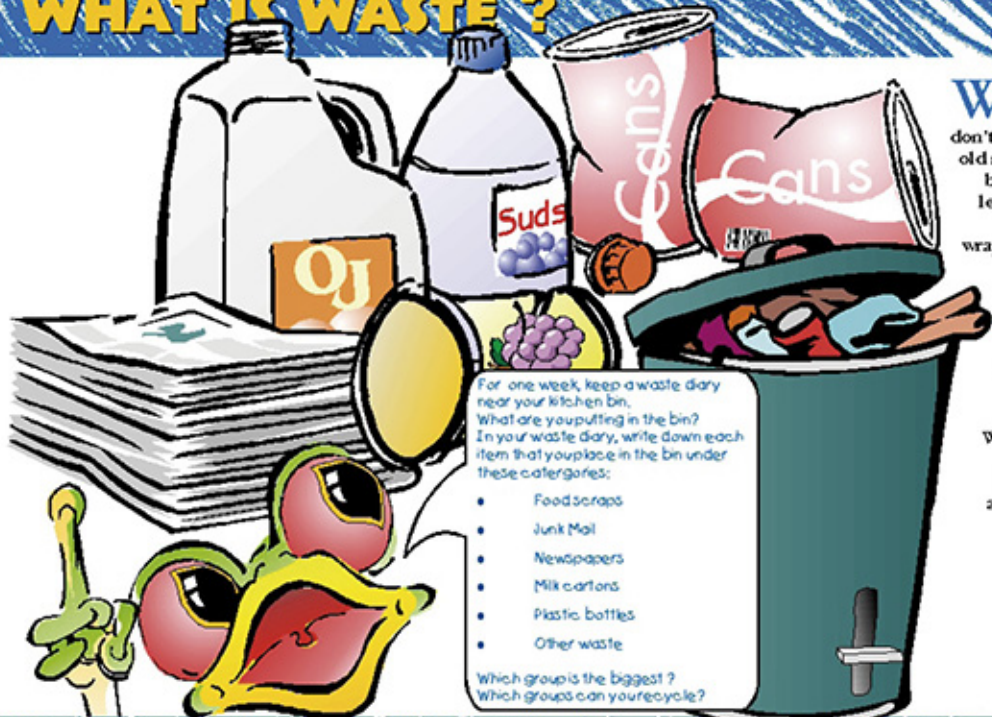
# identity







## WHAT IS WASTE ?



**W**aste is made up of all the things we don't use anymore. Like, old milk cartons, empty bottles, newspapers, leftovers from dinner and chocolate bar wrappers. Think about all the things you throw into the bin at home. This is all waste.

**But what happens to waste?**

Waste can be divided into two major groups, recyclables and non-recyclables.

For one week, keep a waste diary near your kitchen bin. What are you putting in the bin? In your waste diary, write down each item that you place in the bin under these categories:

- Food scraps
- Junk Mail
- Newspapers
- Milk cartons
- Plastic bottles
- Other waste

Which group is the biggest?  
Which groups can you recycle?

**Recyclable** - any material that can be made into something else, e.g. newspaper, cardboard, aluminium cans.  
**Non-recyclable** - materials that cannot be made into anything else.

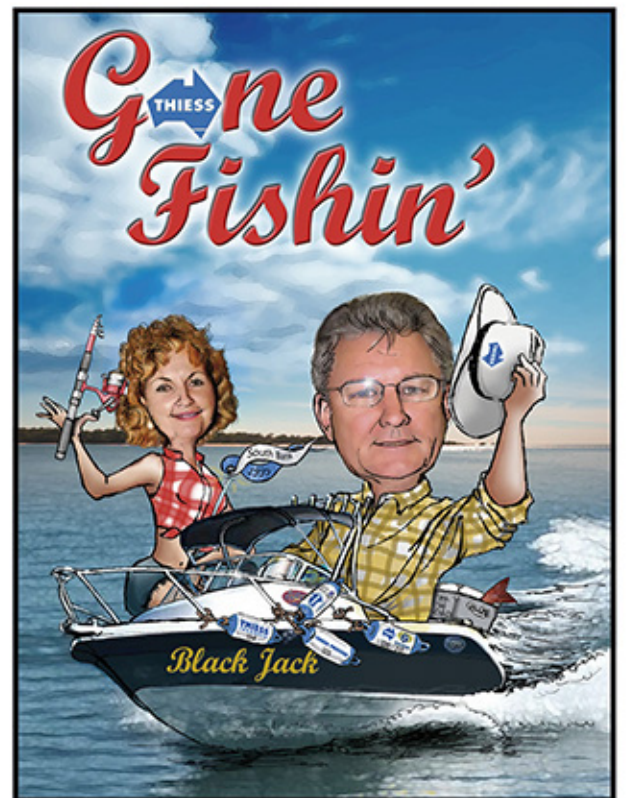
## WHERE DOES WASTE GO ?

**R**ecyclable waste is taken to a Materials Recycling Facility (MRF, pronounced murf) where it is sorted.

The MRF gets these products ready to be recycled. Mixed paper is made into cardboard boxes. Liquid paperboard (milk and juice cartons) is made into copying paper and office supplies. Newspaper is recycled into new papers, egg cartons and garden mulch. Cardboard is recycled into new cardboard and packaging. Aluminium is recycled into new cans, window frames and roofing. Glass is made into many different new glass products and plastic drink bottles made from PET are recycled into new bottles. But what about the rest?



**Materials Recycling Facility (MRF)** - a facility that sorts recyclable material into groups of mixed paper, liquid paper, newspaper, plastic, aluminium and glass.





# large format



*Listen to your eyes - ole graphics visual communication*



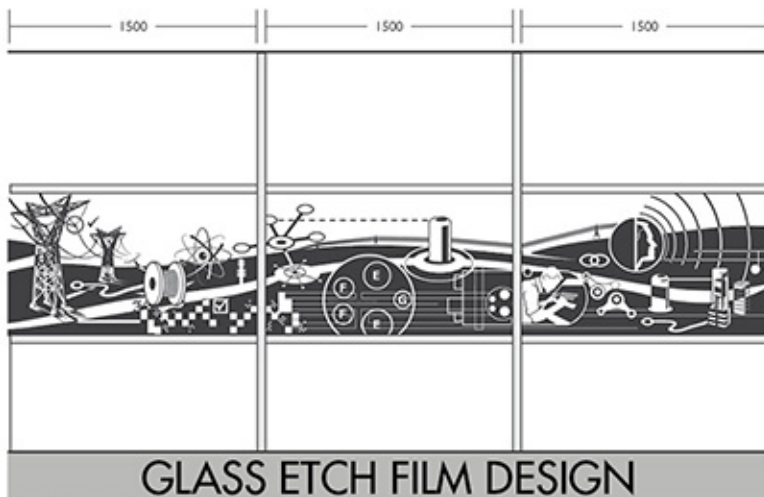
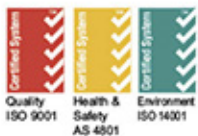
# large format

**SILCAR**  
Communications

*Working with you,  
Working for you*



[www.silcarcomms.com.au](http://www.silcarcomms.com.au)



GLASS ETCH FILM DESIGN



GLASS ETCH FILM INSTALLED

*Listen to your eyes - ole graphics visual communication*



# large format

Sponsored by



PEOPLE  
PRIDE  
PERFORMANCE

[www.thiess.com.au](http://www.thiess.com.au)



*Listen to your eyes - ole graphics visual communication*



# large format



*Listen to your eyes - ole graphics visual communication*



# large format

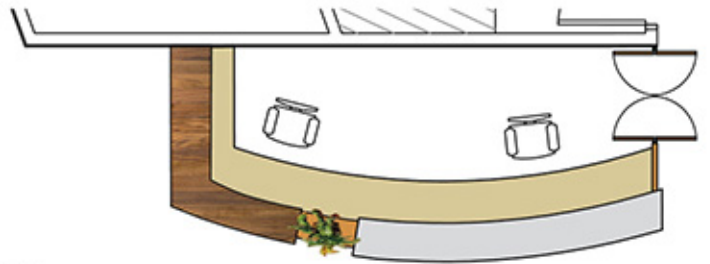


Listen to your eyes - ole graphics visual communication





# large format



PLAN



ELEVATION | Scale 1:50



# large format



*Listen to your eyes - ole graphics visual communication*

## Ausenco Menu

醉鸡  
Drunken Chicken

香牛肉  
Sliced Seasoned Beef

凉拌白菜粉丝  
Cabbage & Vermicelli salad

老醋木耳  
Black Agaric Vinegar

海鲜菜胆汤  
Seafood Vegetable Soup

油泡煎蟹球  
Sautéed Lobster Meat Balls

玉厨麒麟东星斑  
Steamed Sliced Coral Trout Fillet with Mushroom & Beef

日式青芥末牛柳  
Wasabi Fillet Steak

椒盐炸鸭胸  
D/F Quail with Salt & Pepper

四川汁炒带子西兰花  
Sautéed Scallop & Broccoli with Szechwan

上汤蒜子焗白  
Steamed Chinese Cabbage with Supreme Sauce

瑶柱蛋白炒飯  
Fried rice with Egg White & Dry Scallops

精美水果  
Fresh Seasonal Fruit Platter

Client Dinner 2011

**Thiess Health & Wellness**

### Café 5 Loyalty Card

Receive a stamp with every hot drink and receive your 10th hot drink FREE

3	8	13	16
4	9	14	17
5	Free	15	18
			19
			Free

**Chat.**

PERFORMANCE DEVELOPMENT PLANNING FOR INFRASTRUCTURE AND CORPORATE SERVICES

PERSONALISE: \_\_\_\_\_

November 2003

**\$4,000**

Ken Spain    Sandra Troughton

**THIESS**

## Melbourne Cup Luncheon

Tuesday 1st November  
12.30 - 2.30  
Level 5 - Thiess Centre

Tickets \$8.50

Fill out and place in draw for lucky door prize

Name: \_\_\_\_\_

Phone: \_\_\_\_\_

Dear and Say Centre  
Office

Help us spring a  
**SURPRISE BIRTHDAY PARTY**

he will not suspect!

Go on to the Class of '75

**TOP SECRET**

**SILCAR**  
Working with you, working for you

[www.silcarcomms.com.au](http://www.silcarcomms.com.au)

Quality ISO 9001 | Health & Safety AS 4801 | Environment ISO 14001

Exhibitors Information Kit

**THIESS BOUTIQUE BEER, FOOD & WINE FESTIVAL**  
Benefiting Life Stream Foundation

LIFE STREAM  
THIESS

**SILCAR**  
Christmas Party 2012

You and your partner are Invited...

**CASINO ROYALE**

Friday 30 November 2012  
Rendezvous time of 6:30pm  
**Endeavour Ballroom**  
**Novotel, Brighton Le Sands**  
The Grand Parade Brighton-Le-Sands

Dress: 1920's - Black, white and red  
Dress to impress or lounge suit  
No denim

RSVP: 12 November 2012 to Deldre Nash  
dnash@silcarcomms.com.au

**Merry Xmas**

THIESS

**Casino Royale ... Christmas Party 2012**

Saturday 15 December 2012 - 6:30pm  
**Level 12, Rooftop - Rydges Hotel**  
9 Glenelg Street, South Bank

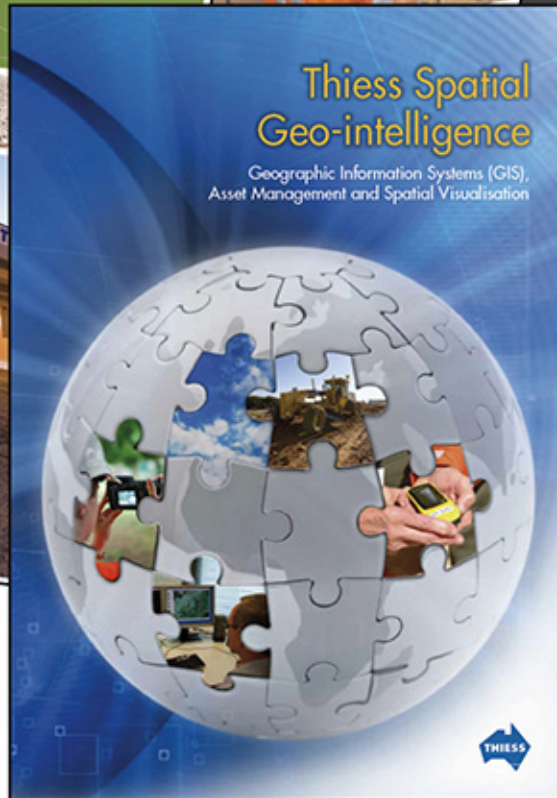
Dress: 1920's - Black, white and red  
Dress to impress or lounge suit

RSVP: 30 November 2012 to ...  
brisbanersvp@silcarcomms.com.au

**SILCAR**



# publication



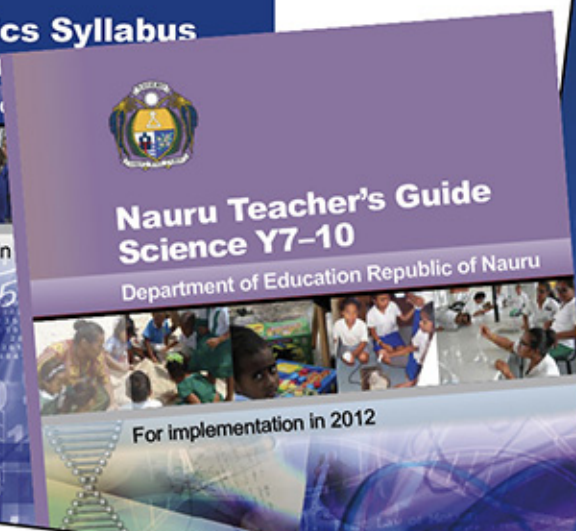
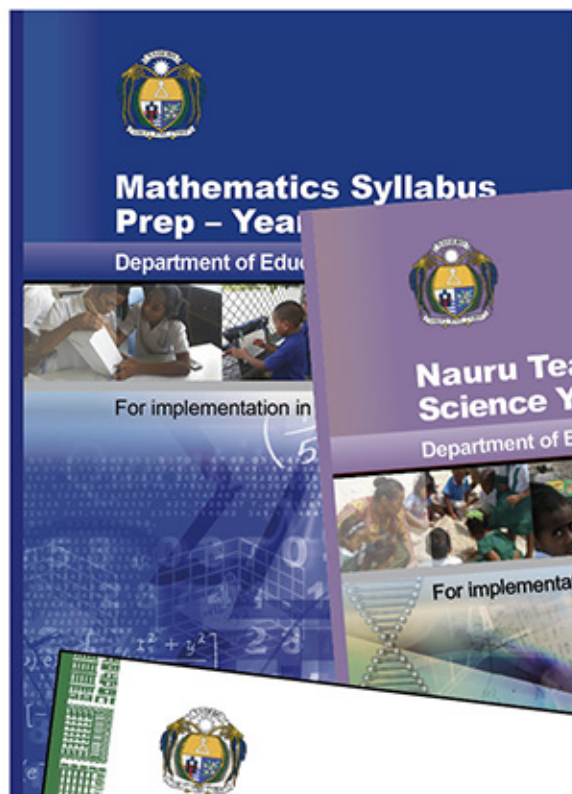
Listen to your eyes - ole graphics visual communication







# publication



*Listen to your eyes - ole graphics visual communication*

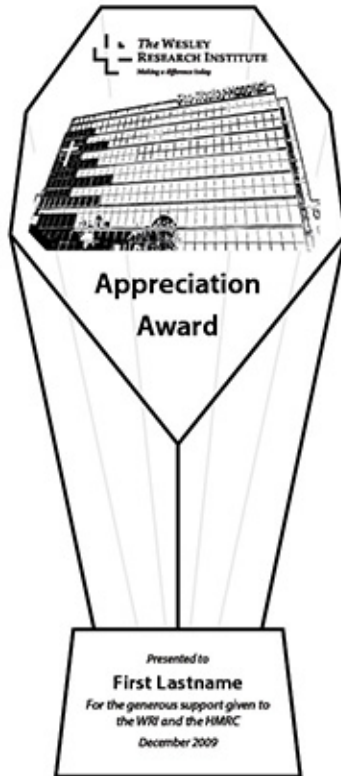




# products



*Listen to your eyes - ole graphics visual communication*



Elevation



Simulation



Elevation



Simulation

Awards



# products



CONCEPT VISUAL – Ken Thies Memorial Scholarship Award



FABRICATION AND ASSEMBLY

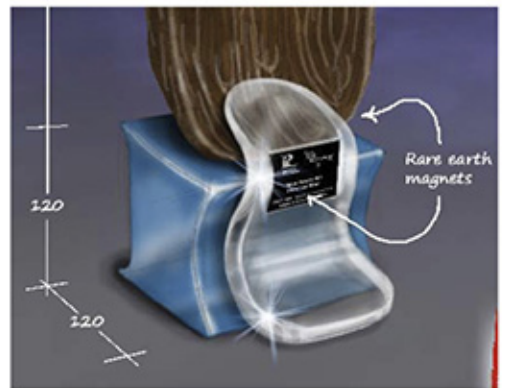


FINAL AWARD TROPHY

*Listen to your eyes - ole graphics visual communication*



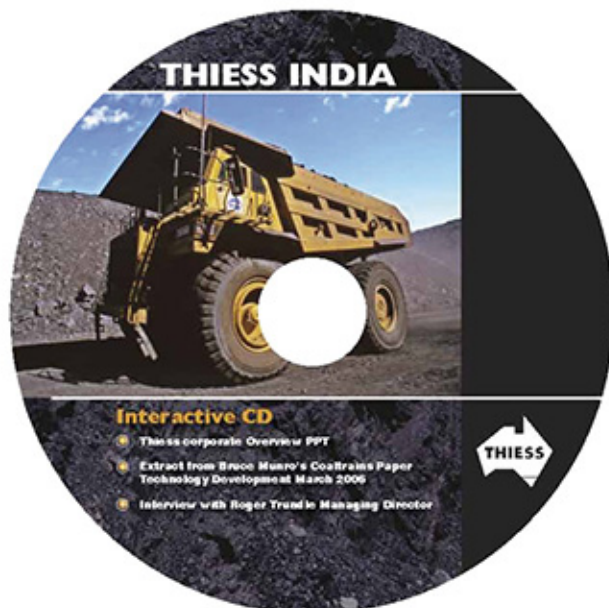
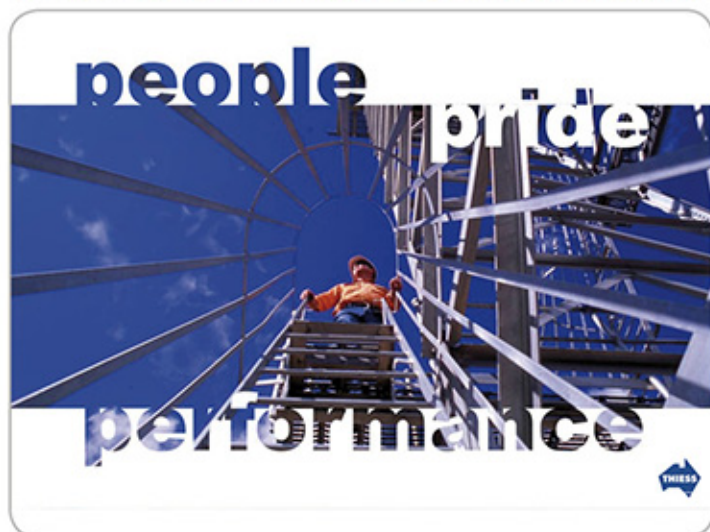
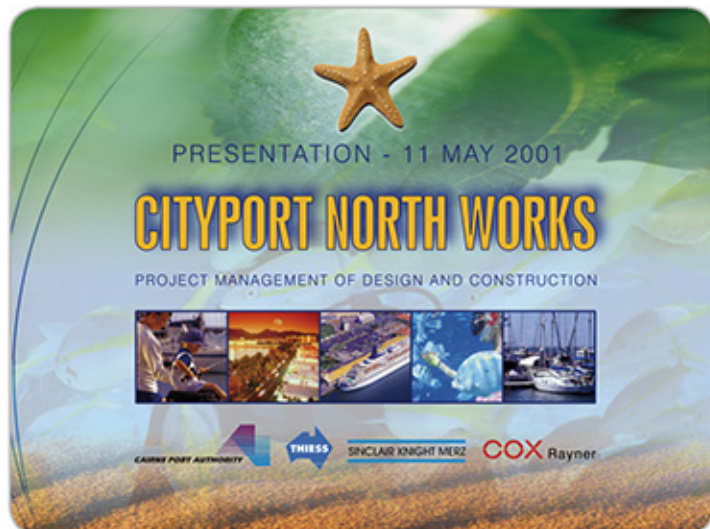
# products







# screen



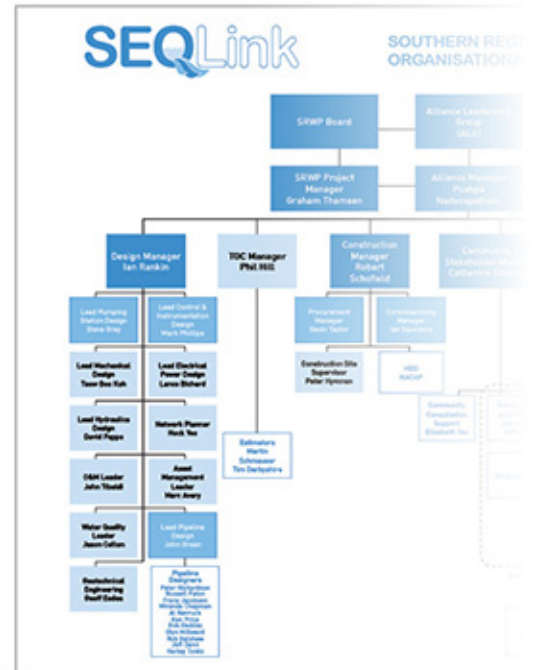
Listen to your eyes - ole graphics visual communication

**SEQLink**

**PROPOSAL for  
SOUTHERN REGIONAL  
WATER PIPELINE  
PROJECT**

Contract No. 0001  
October 2005  
ORIGINAL

**THIESS** **SunWater** **PB PARSONS BRINCKERHOFF**  
Making Water Work



## Proposal Schedule 1 APPRECIATION OF THE PROJECT









# submission



**TENDER FOR MANAGING CONTRACTOR CONTRACT  
OAKLEY REDEVELOPMENT PROJECT**  
TENDER AZ 2467

**ORIGINAL**



SEPTEMBER 2001



 **TENDER FOR MANAGING CONTRACTOR CONTRACT  
OAKLEY REDEVELOPMENT PROJECT**  
TENDER AZ 2467

**ORIGINAL**



**REDEVELOPMENT PROJECT  
CONSTRUCTION STAGING PLANS**

**TENDER FOR MANAGING CONTRACTOR CONTRACT  
OAKLEY REDEVELOPMENT PROJECT**  
TENDER AZ 2467

**disc**  
650MB  
7201-001-001

**THIESS**  
SEPTEMBER 2001



  
**CONTACT**

**ROB HUBBARD**

THIESS PTY LTD  
LEVEL 5, THIESS HOUSE  
40 MCDONOGALL STREET  
MILTON QLD 4064

PHONE (07) 3368 0258  
FAX (07) 3368 0252  
EMAIL rhuubard@thiess.com.au

Listen to your eyes - ole graphics visual communication



# submission



*Listen to your eyes - ole graphics visual communication*

## REMEDIATION WORKS NEIL STREET TOOWOOMBA

CONTRACT No. 10144

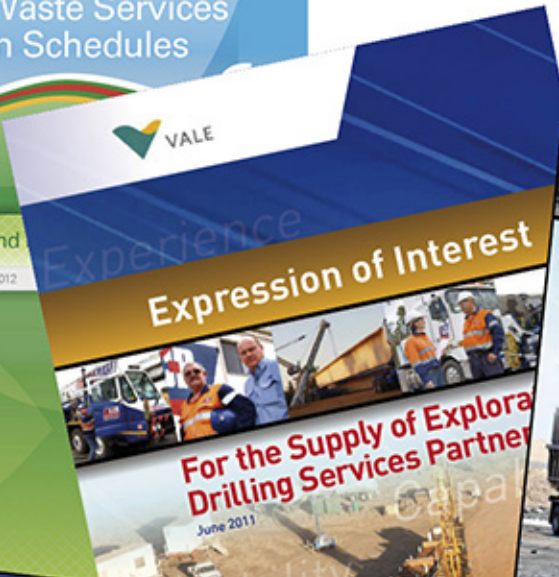
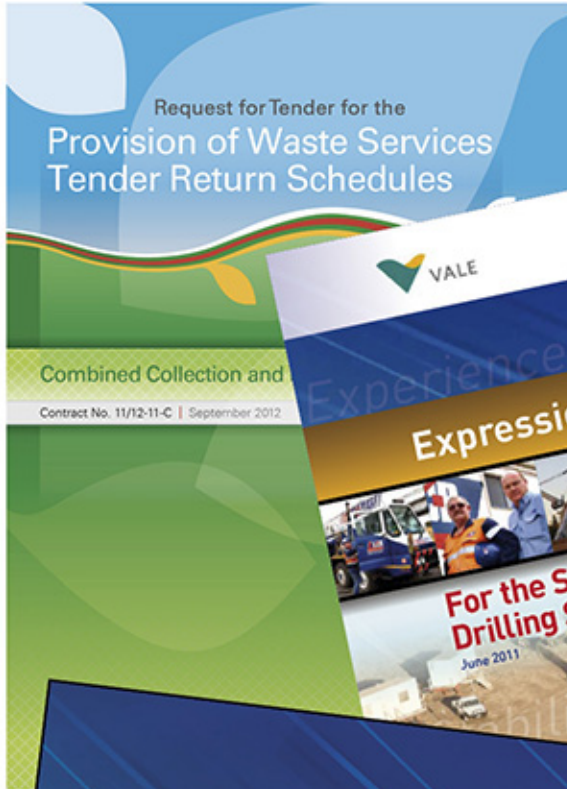
Volume 1



Copy 1  
June 2011



# submission



Listen to your eyes - ole graphics visual communication



# visualisation



## PHOTO EDIT

Extend two fences,  
add mailboxes'  
add plants,  
new light post,  
widen driveway  
and add carport.

*Listen to your eyes - ole graphics visual communication*